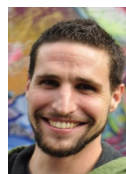


Tower Road Complex Contacts:

Greenhouse Growers:



Josh Manser
JAM672@cornell.edu



Julie Blaha
JAB688@cornell.edu



Merritt Compton
MCCI1@cornell.edu



Paul Cooper
PAC30@cornell.edu



Trey Ramsey
TER35@cornell.edu



Chad Thomas
CMT15@cornell.edu



Laurence Walsh
LWV646@cornell.edu

Greenhouse Supervisor:



Melissa Brechner
MLK38@cornell.edu
607-255-2527 (office)
607-227-5890 (cell)

Plant Growth Facilities Manager:



Andy Leed
ARL6@cornell.edu
607-254-7266 (office)
607-227-4595 (cell)



Cornell University
Agricultural Experiment Station

PURPLE GREENHOUSE RANGE

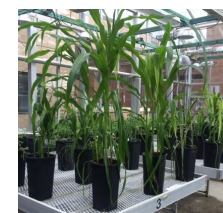
at the
**Plant Science Building,
Tower Road
Greenhouse Complex**



What we provide:

Basic Plant Care:

- Watering 365 days a year
- Pest and disease scouting
- Photoperiod control where possible
- Greenhouse maintenance
- Routine greenhouse sanitation
- Cultural and chemical pest control measures in consultation with facility users
- Beneficial organisms and other biocontrols when compatible with nearby projects and effective pest control can be attained
- Plant material autoclaving when needed (material must be properly bagged by the user)
- Routine application of fertilizer in accordance with user's request
- Seasonal application of shade material



Extended Plant Care: Additional plant care including but not limited to pruning, staking, tying, pollinating, and harvesting is available as resources allow and will be billed at an hourly rate. Please contact your greenhouse supervisor for more information.






Supplies:

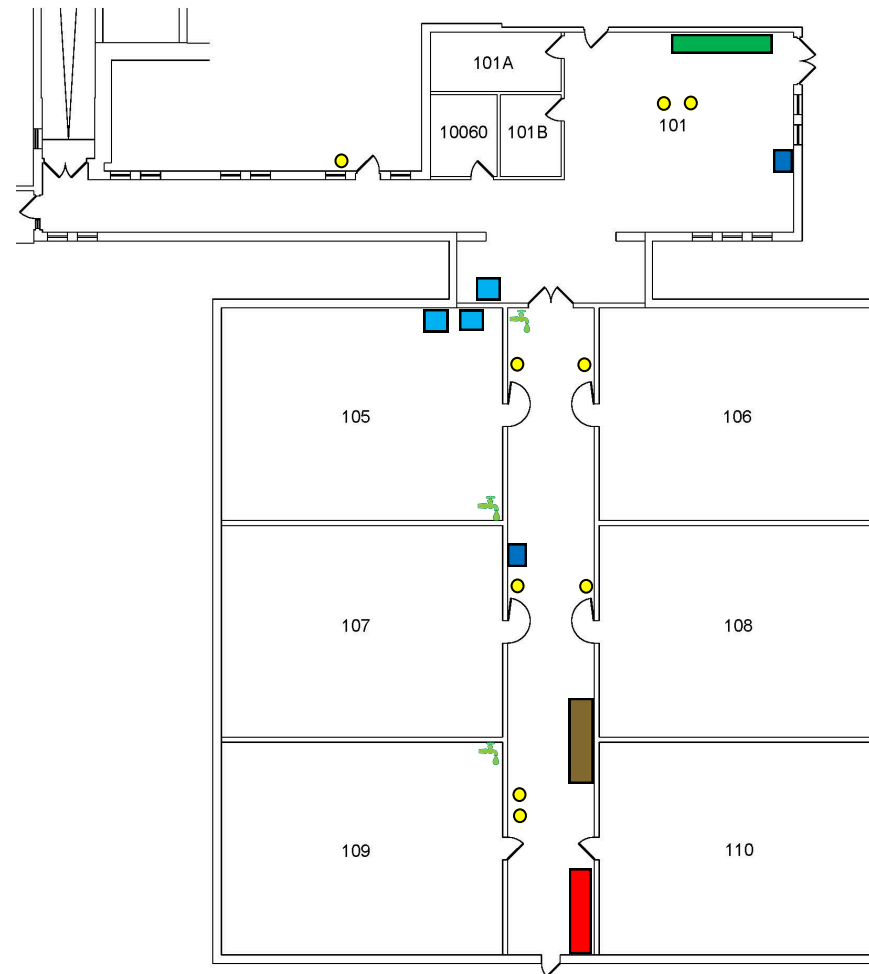
- Plastic trays with various cell pack inserts and selected cell trays
- 4" and 6" pots; 1, 2, and 3 gallon nursery pots
- Selected sizes and styles of bamboo stakes, twist ties, and pot labels
- Standard stock potting media:
 - ◆ *Lambert LMI germination mix*: a mix containing finer particles for seeds, plugs, and cuttings
 - ◆ *Lambert LMI I I*: a well-aerated, general-use mix for most plants
 - ◆ *Cornell Mix*: a general-use mix (has a relatively high fertilizer charge)
 - ◆ Custom mixes at an additional cost

Housekeeping requirements for users:

- Always contact the greenhouse supervisor for inspection and approval of plant material before moving plants into or between greenhouses
- Keep growth and work areas sanitary and orderly.
- Terminate experiments and discard plants in a timely manner. Place used pots and stakes in designated areas for autoclaving.
- Broom-clean floors and benches after terminating experiments.
- Inform the greenhouse supervisor when you exit greenhouse space.

Purple Greenhouses

-  Compost
-  Recycling
-  Autoclave Bins
-  Shelves of sterilized pots/flats/inserts
-  Dirty pots/stakes
-  Inoculation chamber
-  RO water tap



More information:

<http://cuaes.cals.cornell.edu/greenhouses>

Where to find what you need...

For starting your experiment:

Sterile pots, flats, inserts: Located in the Purple headhouse. Pots larger than 6" or larger quantities of washed and sterilized pots, flats, and inserts are available upon request; ask your grower.



Potting media: Bins of media are located under benches in the headhouse.

Pot Labels: Located in a labeled gray cabinet in the headhouse.

Bamboo Stakes: Located in a barrel in the main corridor.

For clean up at experiment's end:

Dispose of plant material: Each greenhouse room has a dedicated yellow compost can that may be used to transport compost to the large bulk compost dumpster located outside, near the main entrance of the greenhouse. Plants and soil requiring autoclaving must be placed in autoclave bags supplied by the greenhouse user. Contact your grower for more information.

Return used greenhouse supplies:

- All plastic pot labels as well as any pots, flats and inserts that are no longer in usable condition should be placed in a recycling bin.
- Used pots, flats, and domes should be placed on the metal cart in the main corridor.
- Clear greenhouse of debris, potting materials and equipment.

If you have specific needs or questions, please ask. Growers are here to help you!